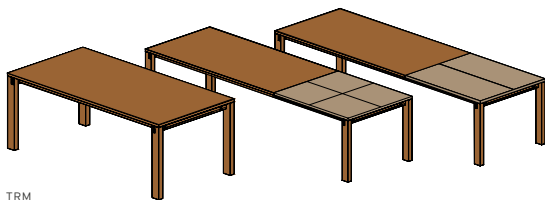


magnum tables



TRM

magnum non-extendable table or with pull out rail

table top: solid wood, coloured glass or ceramic

table insert: solid wood, coloured glass or ceramic

glass colours: see last page

ceramic colours: see last page

types of wood: alder, beech, beech heartwood, oak, wild oak, cherry, walnut, wild walnut, maple white oil, oak white oil, wild oak white oil

leg internal dimensions: length minus 18.2 cm, width minus 11 cm

dimensions non-extendable table:

h	75 clear height 65							
w \ l	130	140	150	160	175	200	225	250
90	•	•	•	•	•	•	•	•
100	•	•	•	•	•	•	•	•
110	•	•	•	•	•	•	•	•

dimensions extendable table:

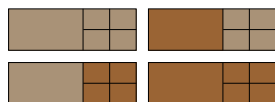
h	75 clear height 64.8							
w \ l	130	140	150	160	175	200	225	250
90	•*	•*	•	•	•	•	•	•
100	•*	•*	•	•	•	•	•	•
110	•*	•*	•	•	•	•	•	•



1 integrated, cushioned insert
panel wood or coloured glass 50 cm
from a table length of 130 cm.



1 integrated, cushioned insert
panel wood or coloured glass 100 cm
from a table length of 150 cm.



2 integrated, cushioned insert
panels wood or coloured glass
2 x 50 cm from a table
length of 150 cm.

*only available for extendable tables with 50 cm insert panels

types of wood

Unless stated otherwise, all wooden surfaces are finished with pure natural oil.
A detailed list of the wood types available for this product can be found on page 1.



alder



beech



beech heartwood



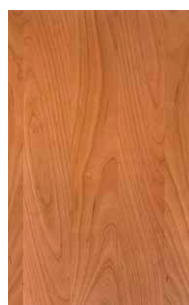
oak



wild oak*



venetian oak**



cherry



walnut



wild walnut*



maple white oil



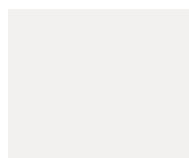
oak white oil



wild oak white oil*

coloured glass

glossy or matt | Glass surfaces in a colour of your choice (see available colours on NCS colour charts, surcharge applies).



white (optiwhite)



sand (optiwhite)



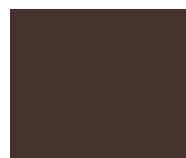
pebble (optiwhite)



taupe (optiwhite)



sludge (optiwhite)



dark brown

medium grey
(optiwhite)

anthracite



black



pearl (matt only)

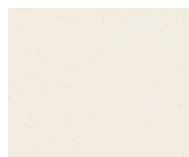


bronze (matt only)

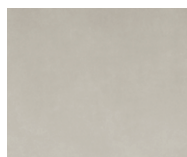


steel (matt only)

ceramic



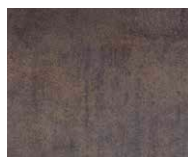
arctic white



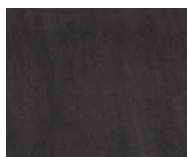
phedra



cement



iron moss



basalt black

colour patterns

Wood is one of the most noble, beautiful and versatile natural products we have. Every piece of wood is unique. Differences in colour are a result of the wood's structure and place of origin. Similarly, the age of the piece of furniture will determine its colour, as natural factors in your home's environment (e.g. sunlight) can change the surface colour. When your order specifies a particular colour, we do our best to match it. But minor variations in wood, leather, glass and ceramic are inevitable. An exact colour match will never be possible.

*wild arrangement only available on fronts and table tops

**venetian oak is only available for fronts