

LINE

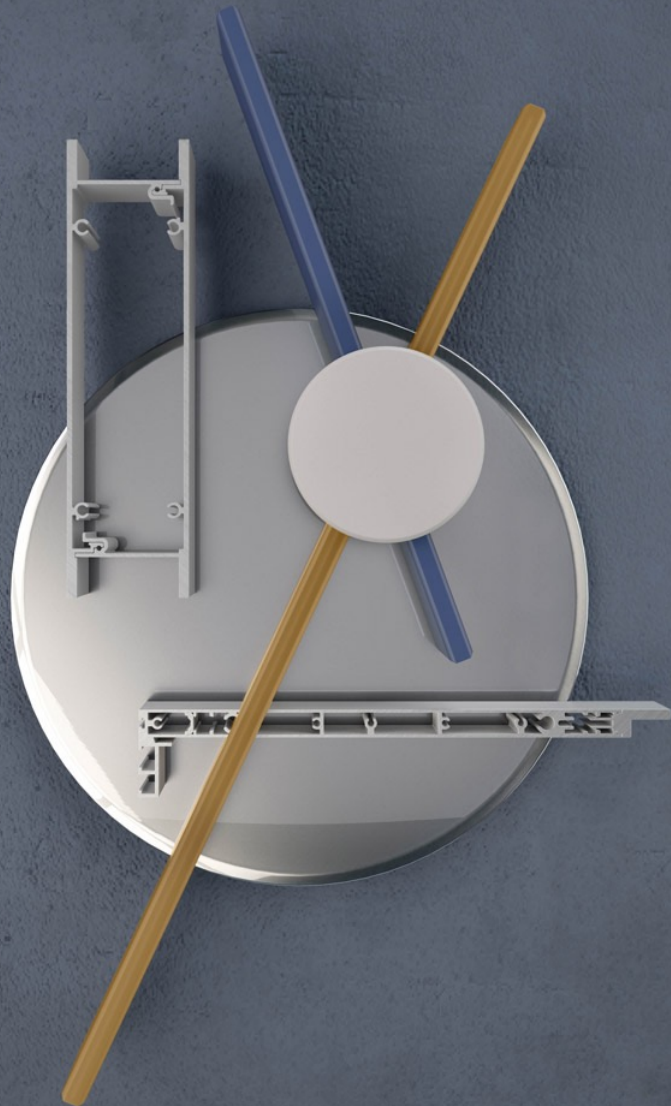
The aluminum profile takes on a leading role in a fantastic designer bookcase.

Type

Bookcases

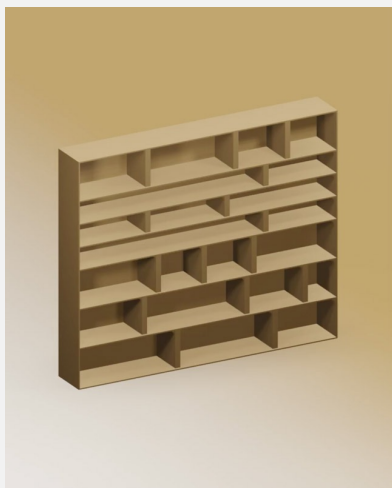
Designed By

Daniele Lo Scalzo Moscheri



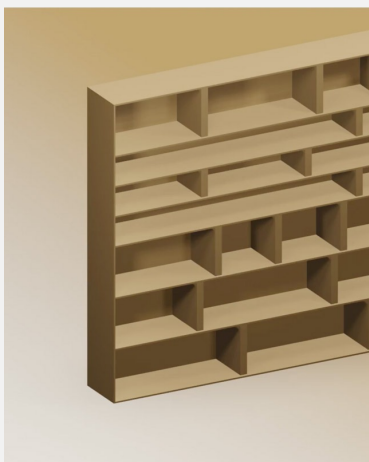
Line is the essence of horizontal space. An authentic designer bookcase in which the horizontal shelf becomes a structural element, and the heights are built up on very thick volumes. Line is a modular system that can be used to play with full and empty spaces, in which the aluminum profile takes on a leading role.

Type



Bookcases

Combinable jambs



Wall upright