

outdoor

Nido

Hand-woven low armchair / sillón bajo tejido

Javier Pastor 2010/2022

C250 T

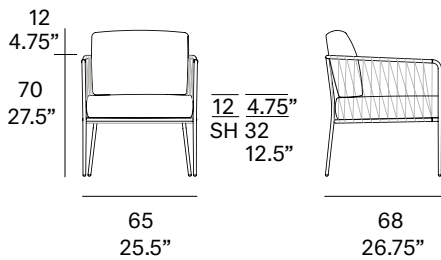


Armchair made of stainless steel tube, and finished with polyester powder. Hand-woven finish with high resistance rope 24 mm/0.94" wide.

Sillón fabricado en tubo de acero inoxidable, con acabado en pintura de polvo de poliéster. Acabado tejido mediante cuerda trenzada de alta resistencia de 24 mm de sección.

Shipment details

Qty	1 armchair (1 box)
Volume	0,36 m3 / 12.7 ft3
Gross weight	19 kg / 42 lb
Net weight	13 kg / 29 lb
Item dimensions (width x depth x height)	65 x 68 x 70 cm 25.5" x 26.75" x 27.5"
COM (1, 40 - 1,50 m / 54"-59")	cushions: 1,7 m / 1.86 yd



Frame / estructura

metallic finishes / metales



120 FT off white
fine textured



124 FT linen
fine textured



102 FT light grey
fine textured



113 FT sage
fine textured



110 FT bronze
fine textured



108 FT oxide
fine textured



111 FT graphite
fine textured

outdoor

Rope / cuerda

polypropylene rope - 24 mm / 0.94" wide



530 SPK
white



520 SPK
sand



534 SPK
bronze



522 SPK
concrete



525 SPK
ivy



531 SPK
graphite



526 SPK
turquoise



527 forest
green



523 SPK
oxide

polyester rope - 24 mm / 0.94" wide



509 taupe



515 SPK
dark orange



dolce 07



dolce 16



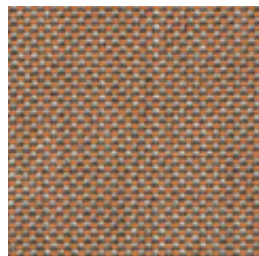
dolce 11



dolce 80



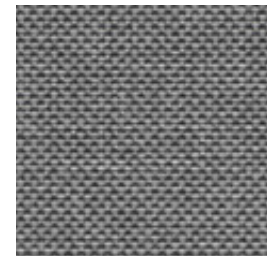
dolce 04



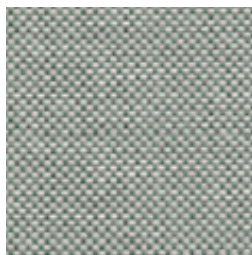
dolce 24



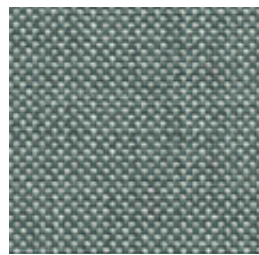
dolce 12



dolce 51



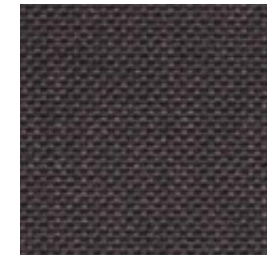
dolce 31



dolce 37



dolce 83



dolce 53

outdoor

Cushions / confección

group 22 - heritage Sunbrella®



heritage papyrus



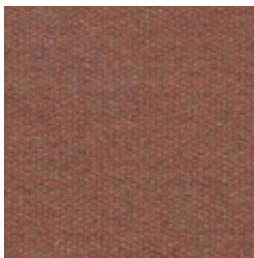
heritage ash



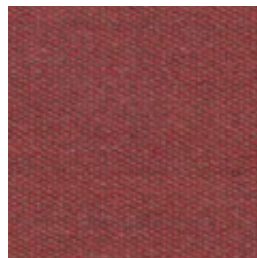
heritage moss



heritage leaf



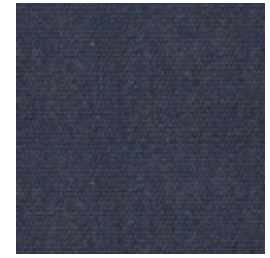
heritage rust



heritage scarlet

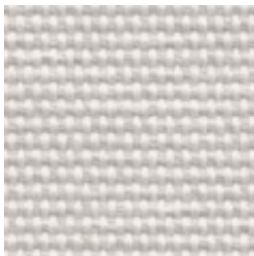


heritage slate



heritage indigo

group 22 - strada Crevin®



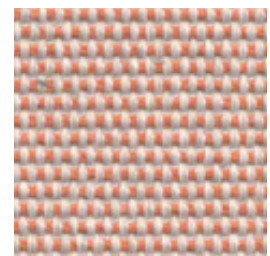
strada 07



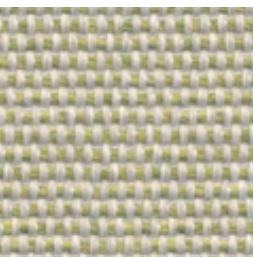
strada 16



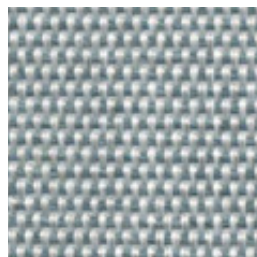
strada 75



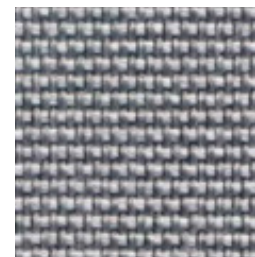
strada 29



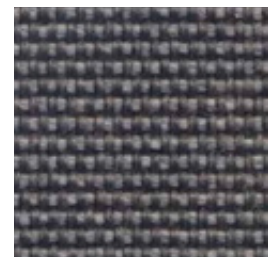
strada 32



strada 43



strada 51

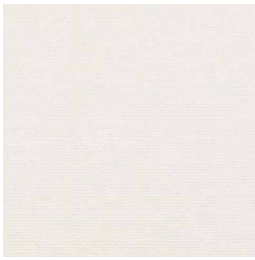


strada 83

outdoor

Cushions / confección

group 22 - silvertex™



silvertex ice



silvertex macadamia



silvertex sandstone



silvertex taupe

group 22 - zander



zander brilliant white



zander parchment

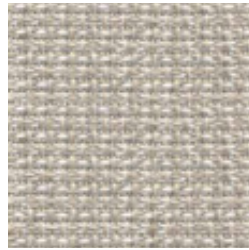


zander ochre

group 22 - tatami



tatami 01



tatami 02



tatami 03

outdoor

Cushions / confección

group 23 - bora bora Crevin®



bora bora 99



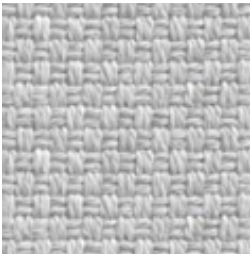
bora bora 08



bora bora 05



bora bora 11



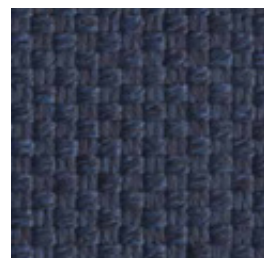
bora bora 50



bora bora 54

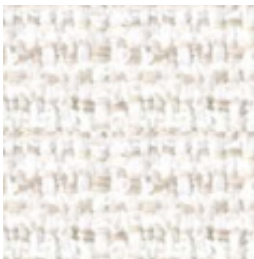


bora bora 42



bora bora 47

group 23 - nature



nature 01

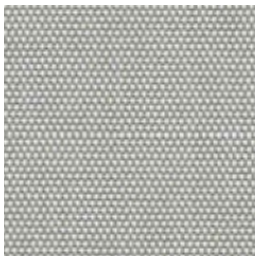


nature 02



nature 03

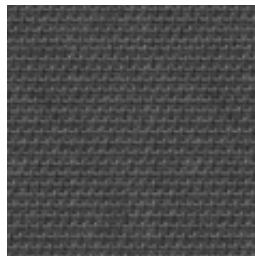
group 23 - sling Sunbrella®



sling sailing seagull



sling sailing space



sling logan graphite

expormim

Expormim S.A.
Pol. Ind. Jaime I
46640 Moixent (Valencia) Spain
+34 962 295 144/5
export@expormim.com
www.expormim.com

Expormim USA LLC
(212) 204-8572
usa@expormim.com
www.expormim.com

7/7