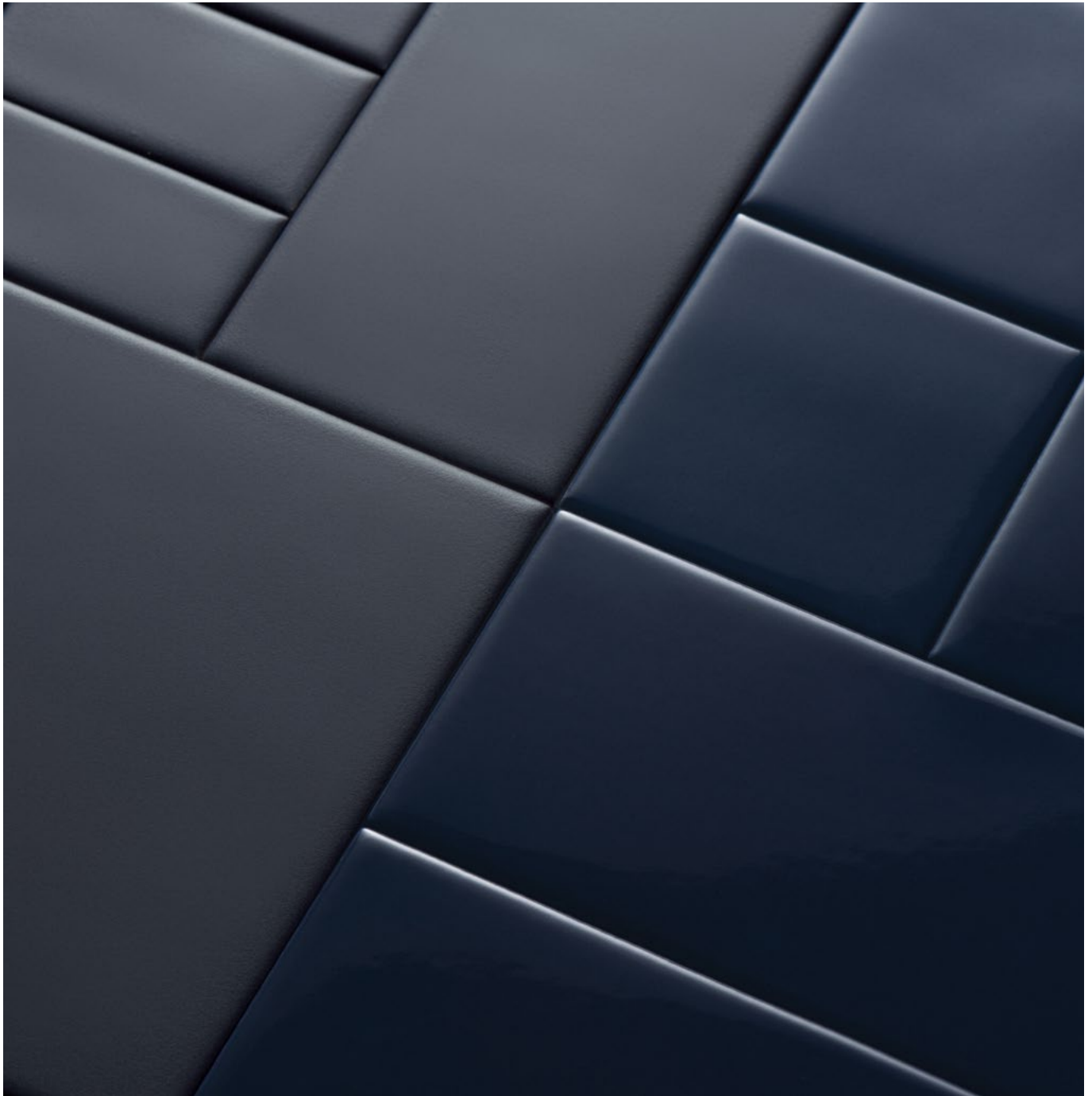


# Mutina

# DIN

by Konstantin Grcic



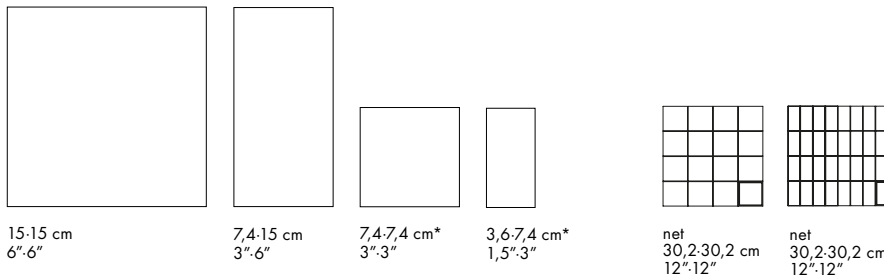
EN

General information  
Laying and maintenance tips  
Colors  
Technical features  
Packing



## General information

collection	Din
design	Konstantin Grcic, 2021
production	Industrial
material	Glazed pressed and not rectified body
thickness	9 mm
nominal sizes	15·15 cm (6"·6") – 7,4·15 cm (3"·6") – 7,4·7,4 cm (3"·3") – 3,6·7,4 cm (1,5"·3")
awards	EDIDA 2022
specification	<ul style="list-style-type: none"> <li>– 8 colors: White, Black, Light Blue, Dark Blue, Light Green, Dark Green, Rose, Red</li> <li>– 2 finishes: Matt and Glossy</li> <li>– The Elements in sizes 7,4x7,4 cm and 3,6 x 7,4 cm are both sold on net 30,2x30,2 cm (12"·12")*</li> <li>– All the tiles present a solid natural, slightly mottled effect typical of artisanal products</li> </ul>
category	Bib UNI EN 14411 (GL)

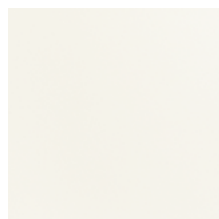


## Laying and maintenance tips

use	Floor, wall – indoor, outdoor
installation	Lay on perfectly flat, dry walls.
recommended adhesive	Non-rapid-drying adhesive for porcelain stoneware to make it easier to fix the sheets.
recommended joints	2mm. Place the sheets with the same joint as within the sheet.
recommended fillers	<p>CEMENT-BASED GROUT: Grout 0.5 m<sup>2</sup> at a time and wash thoroughly with clean water. Remove all traces of grout carefully before it dries completely.</p> <p>EPOXY GROUT: Grout 0.5 m<sup>2</sup> at a time and wash thoroughly with clean water. Remove all traces of grout carefully before it dries completely.</p>
cleaning at the end of installation	<p>CEMENT-BASED GROUT: Buffered acid (e.g. DETERDEK PRO by FILA or similar). Wet the floor with water, dilute the product 1:5 with water and pour it on the floor. Wait for 2-3 minutes then use a white scotch brite pad and rinse well with clean water.</p> <p>EPOXY GROUT: Alkaline detergent (e.g. FILA CR10 by FILA). FILA CR10: apply pure, wait for 30 minutes then use a green scotch brite pad.</p> <p>SILICONE: Solvent for silicone e.g. FILA ZERO SIL. Put it straight onto the stain, wait for 20 minutes and remove the mark using scotch brite.</p> <p>PAINT: Can usually be removed using water, but if resin-based paints or particular enamels have been used, it is best to ask the manufacturer which solvent is most suitable.</p> <p>RUST: stain remover es. FILA NO RUST. Apply the product onto the stain, leave for 15 minutes, remove the residue and rinse thoroughly.</p>
general cleaning (installed tiles)	<p>You are recommended to use ordinary neutral detergent diluted in water. Avoid using acid or alkaline products, waxes and/or impregnants. During ordinary cleaning it is recommended to use extremely abrasive items (such as scourers and iron or steel sponges) as little as possible. This recommendation must be adhered to rigorously in the case of tiles with a glossy surface finishing as they are more susceptible to the risk of scuffs, scratches and loss of shine, etc. In the event of heavy dirt or particularly textured surfaces, use an alkaline detergent and rinse after washing. For large surfaces, the use of a floor washing machine is recommended. During every-day cleaning procedures, it is necessary to remember that certain types of dirt (dust, sand) increase the abrasive effect of foot-traffic. Therefore we recommend that you avoid bringing in this type of dirt, which comes in from the outside, by placing a door-mat at the entrance.</p>
calibers (real size)	<p>151x151 mm with 1 mm tolerance – 74,5x151 mm with 1 mm tolerance</p> <p>74,5x74,5 mm on nets 304x304 mm with 1 mm tolerance – 36,25x36,25 mm on nets 304x304 with 1 mm tolerance</p>

# Colors

8 COLORS  
2 FINISHES



White Matt



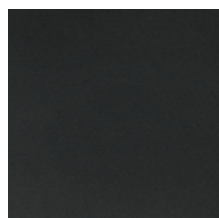
White Glossy



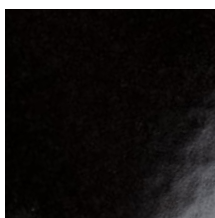
Light Green Matt



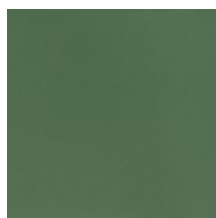
Light Green Glossy



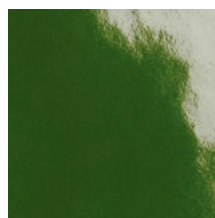
Black Matt



Black Glossy



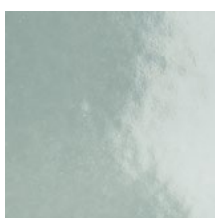
Dark Green Matt



Dark Green Glossy



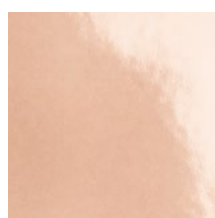
Light Blue Matt



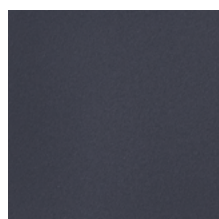
Light Blue Glossy



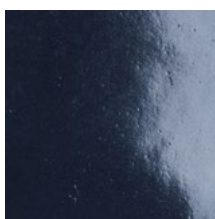
Rose Matt



Rose Glossy



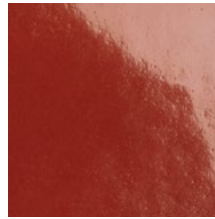
Dark Blue Matt



Dark Blue Glossy



Red Matt

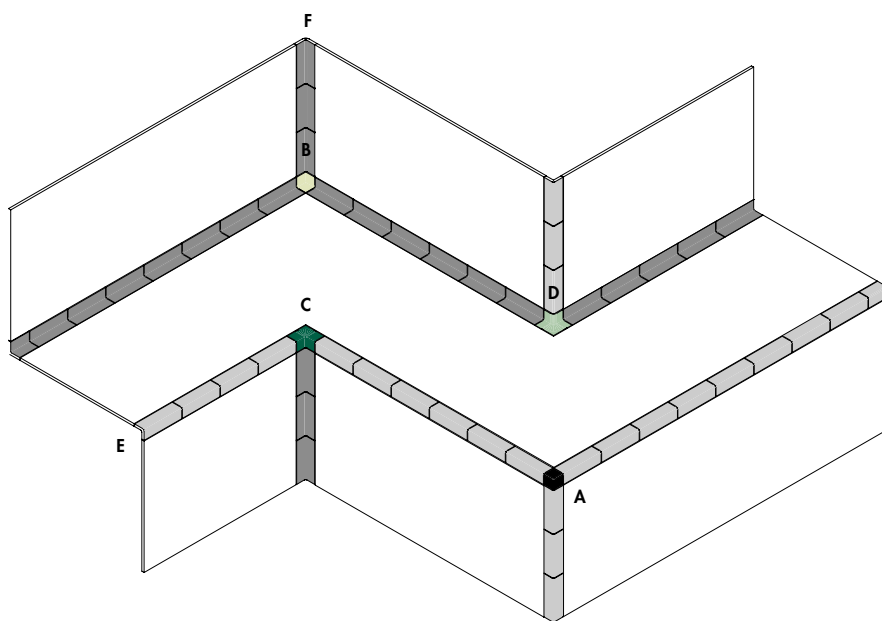
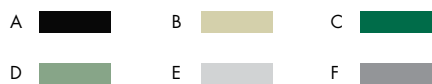
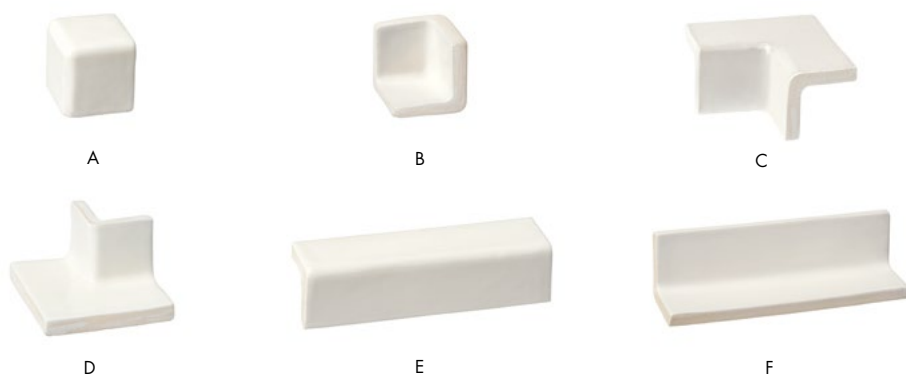


Red Glossy

For information about the available grouts, please contact the sales department.

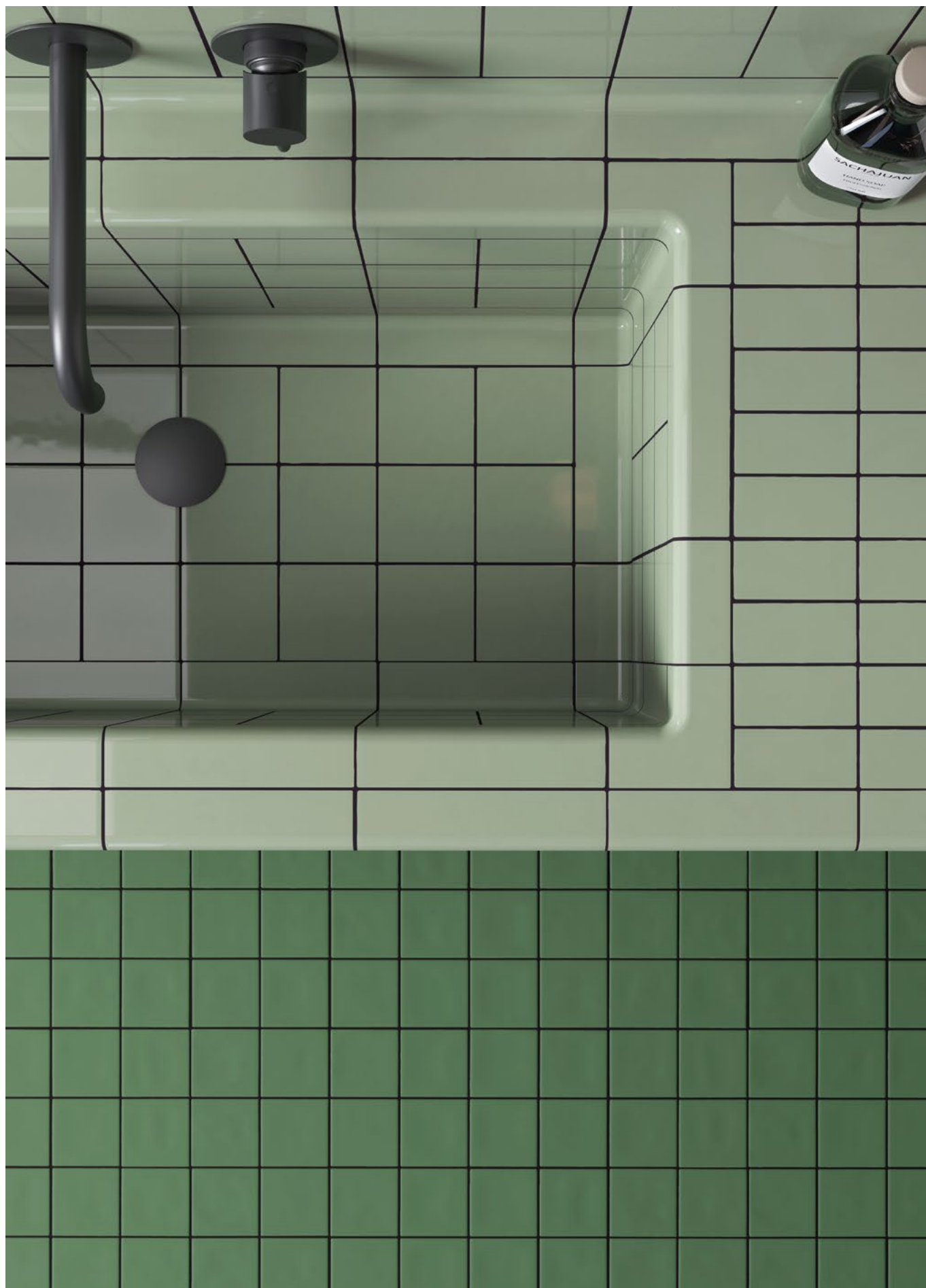
# Special Pieces

collection	Din
design	Konstantin Grcic, 2021
production	Artisanal
material	Glazed pressed, extruded and not rectified body
thickness	9 mm
nominal sizes	(A) 3,8x3,8x3,8 cm – (B) 4,5x4,5x4,5 cm – (C) 7,4x7,4x3,8 cm (D) 7,4x7,4x4,5 cm – (E) 3,8x3,8x15 cm – (F) 4,5x4,5x15 cm
specification	All the special pieces are available in all colors and finishes.
real sizes	(A) 39x39x39 mm +2 mm – (B) 45x45x45 mm +2 mm – (C) 74x74x39 mm +2 mm (D) 74x74x45 mm +2 mm – (E) 39x39x150,5 mm +2 mm – (F) 45x45x150,5 mm +2 mm



To obtain a correct aesthetic result check the actual measurements of both the volumes and the special pieces before installation. This is to align and adjust the pieces and the joint spacings to compensate possible differences in the calibres.

## Special Pieces



## Technical features

STANDARD	FEATURES	VALUE REQUIRED	DIN
ISO 10545/3	water absorption	0,5<x<3%	2,5%
ISO 10545/4	breaking strength	Sp> 7,5 min 1100	resistant
ISO 10545/9	thermal shock resistance	no visible alteration	resistant
ISO 10545/12	frost resistance	no visible alteration	resistant
ISO 10545/13	resistance to chemical attacks	min B	A
ISO 10545/14	stains resistance	class 3	class 5
DIN 51130-04	slip resistance	–	R10 15x15 and 7,4x15 – Matt R11 30,2x30,2 on net – Matt
DIN 51097		–	B 15x15 and 7,4x15 – Matt C 30,2x30,2 on net – Matt
DCOF			>0.77 matt
BS 7976-2			53 dry – matt 38 wet – matt
VOC Emission			available upon request
Declaration of Contents			available upon request
EPD			available upon request
SDS			available upon request
Red List Building Materials			available upon request
BPD3			available upon request
HPD			available upon request

## Packing

SIZE	PCS-SQM	PCS-BOX	SQM-BOX	BOX-PAL	KG-BOX	KG-PAL	SQM-PAL
15·15 cm	44,44	32	0,72	68	13,64	927,52	48,96
7,4·15 cm	88,88	64	0,72	68	13,64	927,52	48,96
net 30,2·30,2 cm (7,4·7,4 cm)	11	8	0,72	42	13,64	572,88	30,24
net 30,2·30,2 cm (3,6·7,4 cm)	11	8	0,72	42	13,64	572,88	30,24