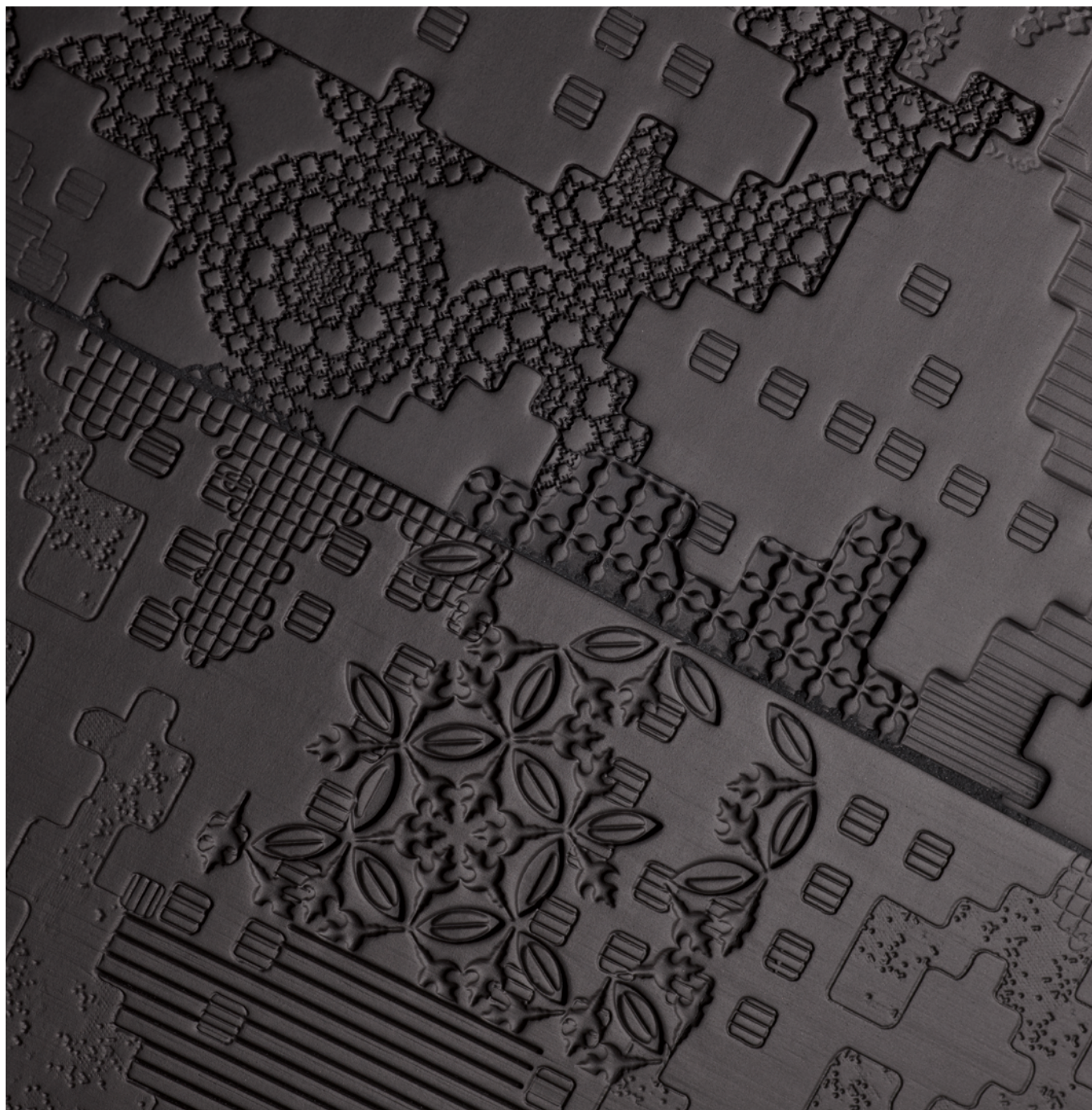


# Mutina

## Bas-Relief

by Patricia Urquiola



EN

General information  
Laying and maintenance tips  
Colors  
Technical features  
Packing



# General information

collection	Bas-Relief
design	Patricia Urquiola, 2010
production	Artisanal
material	Porcelain clays artisanally extruded.
feature	Colours, shade and size variations are intrinsic properties of this hand made product. In order to make grouting easier, a protective silicone film has been applied on each piece. Remove it before the final cleansing.
thickness	9 mm
nominal sizes	PATCHWORK, GARLAND, CLOUD: 18.54 cm (7".21") CODE: 26,5.18 cm (10,55".7")
specification	<ul style="list-style-type: none"> <li>– Handmade collection, manufactured by extrusion and hand cut. The theme of the bas-relief is proposed with several versions and depths.</li> <li>– Composed by 3 patterns just for walls in size 18.54 cm and by a floor base in the size 26, 5.18 cm, Bas-Relief is declined in natural and neutral shades, applied in an innovative way. CODE: the texture is austere and refined. The severity is expressed through the movement which repeats itself on the surface as a code. PATCHWORK: the raised and overlapped details of the patchwork pattern create a design, which is constantly evolving and never repetitive. GARLAND: the flower element is revised with a contemporary and digital attitude.</li> <li>– The finishing of the surface reaches different depths and heights, which create an articulated "chiaroscuro" effect. CLOUD: this airy and light pattern captures the air bubbles on the surface and fixes them in a abstract and constant design. The slight differences in the pattern among the pieces are intentional to obtain a never repetitive laying effect.</li> </ul>
patents	Registered design n° 001912999-0011 – date of registration: 06/09/2011 Registered design n° 001913062-004 – date of registration: 06/09/2011
category	UNI EN 14411 App A (AI group) UGL

## WALLS



18.54 cm  
7".21"



Patchwork

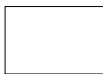


Garland

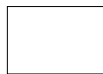


Cloud

## WALLS + FLOORS



26,5-18 cm  
10,55".7"



Code

# Laying and maintenance tips

use	Code: Floor, wall – indoor, outdoor. Patchwork, Garland, Cloud: wall – indoor, outdoor.
installation	For an even, smooth shading effect when laying, alternate material from several different boxes.
recommended adhesive	NON-RAPID-DRYING adhesive for porcelain stoneware to make it easier to fix the pieces.
recommended joints	2mm joints. Use wedges to fix the caliber differences in work size between tiles.
recommended fillers	Cement-based grout/Epoxy grout. After grouting, remove the protective film and finish the joints with a sponge and clean water.
cleaning at the end of installation	<p><b>CEMENT-BASED GROUT:</b> Buffered acid (e.g. DETERDEK PRO by FILA, or similar). Wet the floor with water, dilute the product 1:5 with water and pour it on the floor. Wait for 2 or 3 minutes then use a white scotch brite pad and rinse well with clean water.</p> <p><b>EPOXY GROUT:</b> Alkaline detergent (e.g. FILA CR10 by FILA). FILA CR10: apply pure, wait for 30 minutes then use a green scotch brite pad.</p> <p><b>SILICONE:</b> Solvent for silicone (e.g. FILA ZERO SIL.). Pour it straight onto the stain, wait for 20 minutes and remove the mark using scotch brite.</p> <p><b>PAINT:</b> Can usually be removed using water, but if resin-based paints or particular enamels have been used, it is best to ask the manufacturer which solvent is most suitable.</p> <p><b>RUST:</b> stain remover es. FILA NO RUST. Apply the product onto the stain, leave for 15 minutes, remove the residue and rinse thoroughly.</p>
general cleaning (installed tiles)	You are recommended to use ordinary neutral detergent diluted in water. Avoid using acid or alkaline products, waxes and/or impregnants. During ordinary cleaning it is recommended to use extremely abrasive items (such as scourers and iron or steel sponges) as little as possible. This recommendation must be adhered to rigorously in the case of tiles with a glossy surface finishing as they are more susceptible to the risk of scuffs, scratches and loss of shine, etc. In the event of heavy dirt or particularly textured surfaces, use an alkaline detergent and rinse after washing. For large surfaces, the use of a floor washing machine is recommended. During every-day cleaning procedures, it is necessary to remember that certain types of dirt (dust, sand) increase the abrasive effect of foot-traffic. Therefore we recommend that you avoid bringing in this type of dirt, which comes in from the outside, by placing a door-mat at the entrance.
calibers (real size)	The product is artisanal and hand made, thus each tile has a tolerance of +/- 2 mm.

# Colors



Cloud bianco



Garland bianco



Patchwork bianco



Code bianco



Cloud cipria



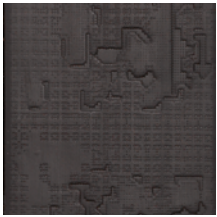
Garland cipria



Patchwork cipria



Code cipria



Cloud nero



Garland nero



Patchwork nero



Code nero

For information about the available grouts, please contact the sales department.

## Technical features

STANDARD	FEATURES	VALUE REQUIRED	BAS-RELIEF
ISO 10545/3	water absorption	$E \leq 3\%$	0,07%
ASTM C373			0,07%
ISO 10545/4	breaking strength	$S_p > 7,5 \text{ min } 1300$	resistant
ISO 10545/6	resistance to deep abrasion	$275 \text{ mm}^3 \text{ max}$	$274,4 \text{ mm}^3$
ISO 10545/9	resistance to thermal shock	no visible alteration	resistant
ASTM C484		unaffected	unaffected
ISO 10545/12	frost resistance	no visible alteration	resistant
ASTM C1026		unaffected	unaffected
ISO 10545/13	resistance to chemical attacks	no visible alteration	resistant
ASTM C650		unaffected	unaffected
ISO 10545/14	stains resistance	minimum 3	5
DIN 51130 - 04	slip resistance	medium values $6 \div 10^\circ$ R9 $10 \div 19^\circ$ R10 $19 \div 27^\circ$ R11 $27 \div 35^\circ$ R12 $> 35^\circ$ R13	R11
DIN 51097			
DCOF		$> 0,42$	0,56

## Packing

SIZE	PCS-SQM	PCS-BOX	SQM-BOX	BOX-PAL	KG-BOX	KG-PAL	SQM-PAL
18-54 cm	10,29	10	0,97	45	19,45	875,00	43,65
26,5-18 cm	20,96	20	0,95	45	18,75	844,00	42,75