

Mutina

Folded ^{XL} by Raw Edges



EN

General information
Laying and maintenance tips
Colors
Technical features
Packing



General information

collection	Folded XL
design	Raw Edges, 2017
production	Industrial
material	Unglazed homogeneous porcelain stoneware
features	Squared and rectified slabs each one exactly the same as the others
thickness	5,6 mm
nominal sizes	100-300 cm (39,4"-118")
specification	<ul style="list-style-type: none">- 1 color- Extra white body of porcelain stoneware, without additions of glazes or colouring agents.- Pure ceramic clay pressed in a latest generation machine to obtain textured surfaces even on large slabs.- Rectified edges to allow a joint of just 2 mm.- Suitable for both floor and wall tiles, for indoor and outdoor use
patents	Registered design (tiles) n° 001912999-011 – date of registration: 06/09/2011
category	UNI EN 14411 App G (BIA group) UGL

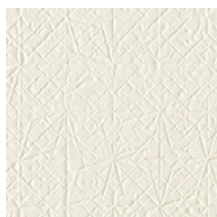


100-300 cm
39,4"-118"

Laying and maintenance tips

use	Floor, wall – indoor, outdoor.
installation	Check the flatness with a 2 metre long straight edge, by placing it on the screed in all directions. Maximum permissible tolerance 3 mm. Use specific self-levelling products if the difference is greater
recommended adhesive	For tiling a floor on substrates such as cement and anhydrite screed (after applying a primer), Class C2S2 cementitious adhesives are normally used for the largest format. On floor heating, even smaller formats must be laid with Class C2S2 cementitious adhesives. On pre-existing or old ceramic tiled floors, it is advisable to use quick-setting adhesives.
recommended joints	2mm joints. Use wedges to fix the caliber differences in work size between tiles.
recommended fillers	Cementitious grout / epoxy grout.
cleaning at the end of installation	CEMENT-BASED GROUT: Buffered acid (e.g. DETERDEK PRO by FILA, or similar). Wet the floor with water, dilute the product 1:5 with water and pour it on the floor. Wait for 2 or 3 minutes then use a white scotch brite pad and rinse well with clean water. EPOXY GROUT: Alkaline detergent (e.g. FILA CR10 by FILA). FILA CR10: apply pure, wait for 30 minutes then use a green scotch brite pad. SILICONE: Solvent for silicone (e.g. FILA ZERO SIL.). Pour it straight onto the stain, wait for 20 minutes and remove the mark using scotch brite. PAINT: Can usually be removed using water, but if resin-based paints or particular enamels have been used, it is best to ask the manufacturer which solvent is most suitable. RUST: stain remover es. FILA NO RUST. Apply the product onto the stain, leave for 15 minutes, remove the residue and rinse thoroughly.
general cleaning (installed tiles)	You are recommended to use ordinary neutral detergent diluted in water. Avoid using acid or alkaline products, waxes and/or impregnants. During ordinary cleaning it is recommended to use extremely abrasive items (such as scourers and iron or steel sponges) as little as possible. This recommendation must be adhered to rigorously in the case of tiles with a glossy surface finishing as they are more susceptible to the risk of scuffs, scratches and loss of shine, etc. In the event of heavy dirt or particularly textured surfaces, use an alkaline detergent and rinse after washing. For large surfaces, the use of a floor washing machine is recommended. During every-day cleaning procedures, it is necessary to remember that certain types of dirt (dust, sand) increase the abrasive effect of foot-traffic. Therefore we recommend that you avoid bringing in this type of dirt, which comes in from the outside, by placing a door-mat at the entrance.
calibers (real size)	1000 mm x 3000 mm

Colors



For information about the available grouts, please contact the sales department.

Technical features

STANDARD	FEATURES	VALUE REQUIRED	FOLDED XL
ISO 10545/2	SIZES		
	length and width	± 0,6%	in conformity with standard
	thickness	± 5%	
	straightness of edges	± 0,5%	
	wedging	± 0,5%	
	flatness	± 0,5%	
ISO 10545/3	water absorption	< 0,5%	in conformity with standard
ISO 10545/6	resistance to deep abrasion	≤ 175mm ³	in conformity with standard
ISO 10545/9	resistance to thermal shock	no visible alteration	resistant
ASTM C484		no samples must show visible defects	unaffected
ISO 10545/12	frost resistance	no visible alteration	resistant
ISO 10545/13	resistance to chemical attacks	no visible alteration	resistant
ISO 10545/14	stains resistance	class 3	class 5
DIN 51130-04	slip resistance	medium values 6÷10° R9 10÷19° R10 19÷27° R11 27÷35° R12 > 35° R13	R10
DIN 51097		–	–
DCOF		> 0,42	0,68
Pendulum AS/NSZ 4586-13			–
LEED CERTIFICATION 4.1			30% pre-consumer recycled material
ISO 14000 and ISO 9001			
Robinson Test		–	–
VOC Emission			available upon request
Declaration of Contents			available upon request
EPD			available upon request
SDS			available upon request
BPD3			available upon request
HPD			available upon request



Packing

SIZE	PCS-SQM	PCS-BOX	SQM-PC	PC-PAL	KG-PC	KG-PAL	SQM-PAL
100-300 cm	0,33	1	3	13	42,60	554,00	39,00