

outdoor

Nautica outdoor Swing chair / columpio

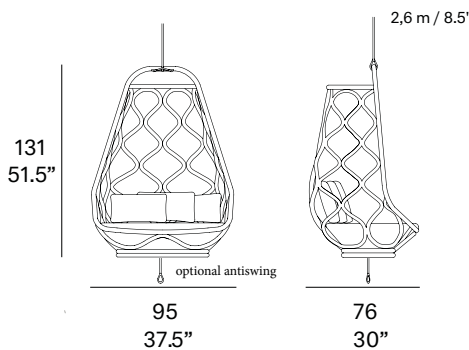
MUT Design 2013

C360



Swing chair structure made of high resistance aluminum tube finished with polyester powder. Expanded poliurethane seat cushion with removable waterproof and fireproof cover made of polyester with special anti-mould and anti-bacterial treatment. 3 loose cushions 19.75"x12.5" included. Braided polyester rope is provided to hang the swing chair (8.5'). Optional anti-swing (braided polyester rope + carabiner).

Estructura del columpio fabricada en tubo de aluminio de alta resistencia, con acabado en pintura de polvo de poliéster. Cojín de asiento en poliuretano expandido con funda hidrófuga e ignífuga fabricada en poliéster con un tratamiento especial antifúngico y antibacteriano. 3 cojines decorativos de 50x32 cm incluidos. Cuerda de poliéster suministrada necesaria para colgar el columpio (2,60 m). Anti-swing opcional (cuerda de poliéster + mosquetón).



Shipment details

Qty	1 swing chair (1 box)
Volume	1,04 m3 / 37 ft3
Gross weight	19 kg / 42 lb
Net weight	14 kg / 31 lb
Item dimensions (width x depth x height)	95 x 76 x 131 cm 37.5" x 30" x 51.5"
COM	seat cushion: 1,8 m / 2 yd loose cushion: 1,5 m / 1.7 yd

Certifications

UNE EN 581-1:2006
UNE EN 581-2:2016

Awards



reddot award 2017
winner

expormim

Expormim S.A.
Pol. Ind. Jaime I
46640 Moixent (Valencia) Spain
+34 962 295 144/5
export@expormim.com
www.expormim.com

Expormim USA LLC
(212) 204-8572
usa@expormim.com
www.expormim.com

1/6

Frame / estructura

metallic finishes / metales



120 FT off white
fine textured



124 FT linen
fine textured



102 FT light grey
fine textured



113 FT sage
fine textured



110 FT bronze
fine textured



108 FT oxide
fine textured



111 FT graphite
fine textured



dolce 07



dolce 16



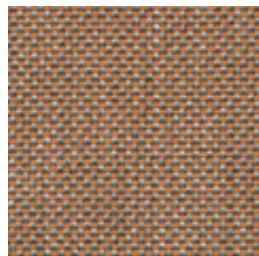
dolce 11



dolce 80



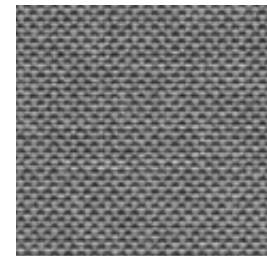
dolce 04



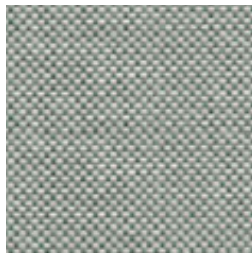
dolce 24



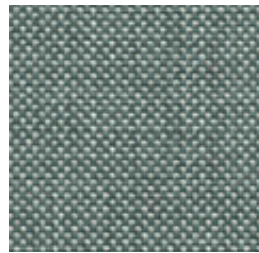
dolce 12



dolce 51



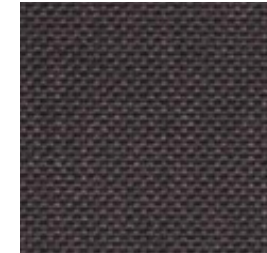
dolce 31



dolce 37



dolce 83



dolce 53

outdoor

Cushions / confección

group 22 - heritage Sunbrella®



heritage papyrus



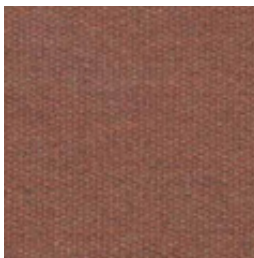
heritage ash



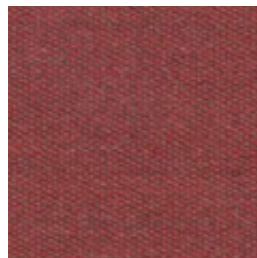
heritage moss



heritage leaf



heritage rust



heritage scarlet



heritage slate



heritage indigo

group 22 - strada Crevin®



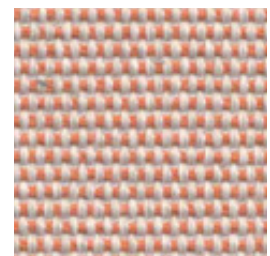
strada 07



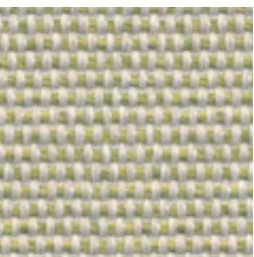
strada 16



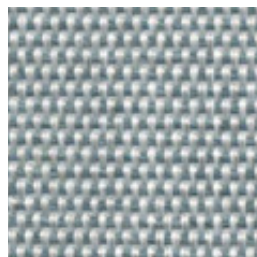
strada 75



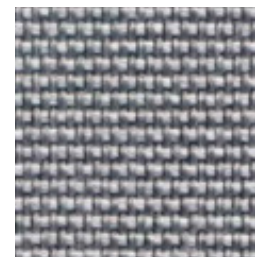
strada 29



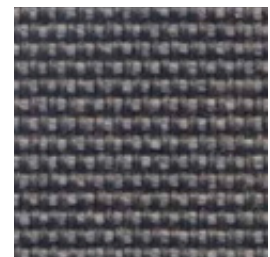
strada 32



strada 43



strada 51

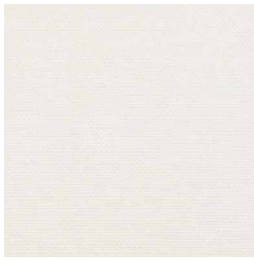


strada 83

outdoor

Cushions / confección

group 22 - silvertex™



silvertex ice



silvertex macadamia



silvertex sandstone



silvertex taupe

group 22 - zander



zander brilliant white



zander parchment

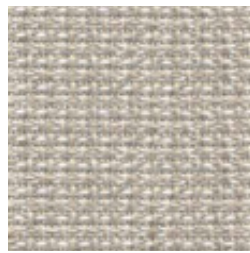


zander ochre

group 22 - tatami



tatami 01



tatami 02



tatami 03

outdoor

Cushions / confección

group 23 - bora bora Crevin®



bora bora 99



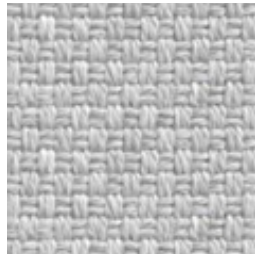
bora bora 08



bora bora 05



bora bora 11



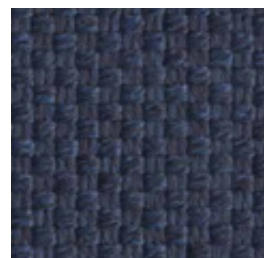
bora bora 50



bora bora 54

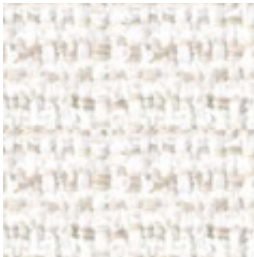


bora bora 42



bora bora 47

group 23 - nature



nature 01

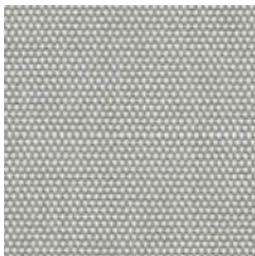


nature 02



nature 03

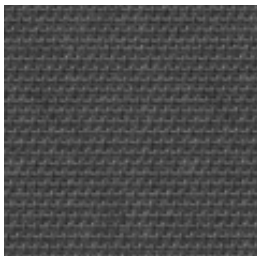
group 23 - sling Sunbrella®



sling sailing seagull



sling sailing space



sling logan graphite

expormim

Expormim S.A.
Pol. Ind. Jaime I
46640 Moixent (Valencia) Spain
+34 962 295 144/5
export@expormim.com
www.expormim.com

Expormim USA LLC
(212) 204-8572
usa@expormim.com
www.expormim.com

6/6