

indoor

# Huma

## Swivel armchair / sillón giratorio

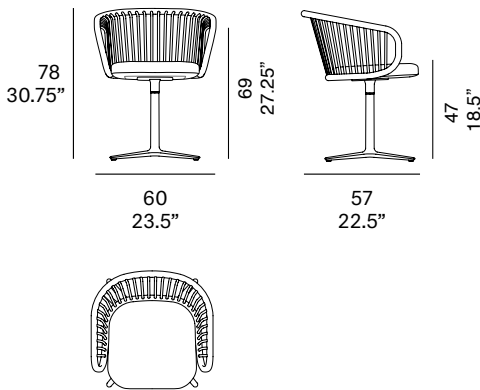
Mario Ruiz, 2015/2021

T070 SP



Swivel armchair with structure made of peeled and tinted natural rattan of 1.1" diameter. Backrest manufactured in peeled and tinted natural rattan of 0.4" diameter. Finished with a three step water-based coating (dye, base coat and top coat) highly resistant to solar radiation thanks to UV filters. Upholstered seat with metal legs. Possibility of customization through a wide variety of high performance technical fabrics. Protective caps with felt inserts.

Sillón giratorio con estructura en rattan natural pelado y tintado de 28 mm de calibre. Respaldo fabricado en rattan natural pelado y tintado de 10 mm de calibre. Acabado con recubrimiento en tres fases (tinte, fondo y acabado) con filtros UV que lo hacen altamente resistente a la radiación solar. Los acabados utilizados son en base al agua. Asiento tapizado y patas metálicas. Posibilidad de personalización mediante una amplia variedad de tejidos técnicos de altas prestaciones de uso. Tacos protectores con fieltro.



### Shipment details

Qty	1 armchair (1 box)
Volume	0,33 m <sup>3</sup> / 11.7 ft <sup>3</sup>
Gross weight	14,5 kg / 32 lb
Net weight	10,5 kg / 23.1 lb
Box dimensions (approx.)	65 x 62 x 83 cm 25,5" x 24,5" x 32,75"
Item dimensions (width x depth x height)	60 x 57 x 78 cm 23.5" x 22.5" x 30.75"
COM (1, 40 - 1,50 m / 54"-59")	0,65 m / 0.7 yd

**Rattan**

**tinted**



R10 natural



R03 noce



R06 verde oliva



R08 azzurro



R07 mogano



R24 cinder purple



R23 french grey



R05 grigio



R09 nero

**lacquered**



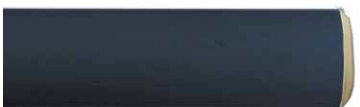
R02 bianco



R22 clay



R17 forest green



R16 navy blue



R14 japanese red



indoor

legs / patas

metallic finishes / metales

---



601 FT black

Cushions / confección

group 1 - natté Sunbrella®



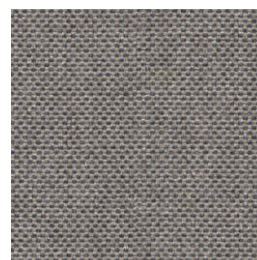
natté white



natté canvas



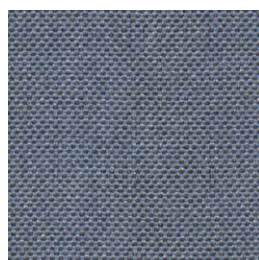
natté taupe chalk



natté carbon beige



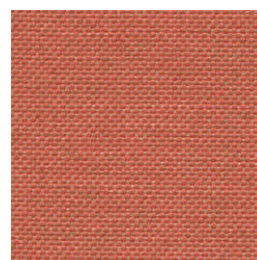
natté dark taupe



natté carbon sky



natté amber



natté flamingo

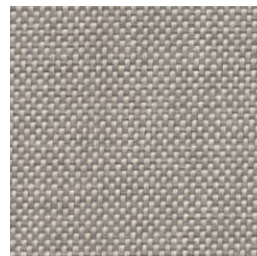
group 1 - dolce Crevin®



dolce 07



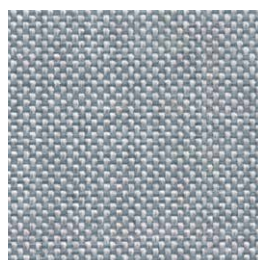
dolce 16



dolce 75



dolce 53



dolce 43



dolce 24



dolce 30

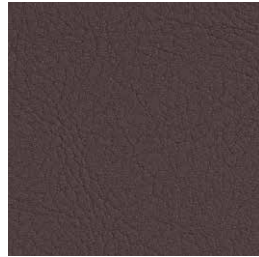
indoor

Cushions / confección

group 1 - valencia™ faux leather



valencia 1049



valencia 0020

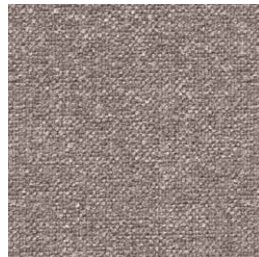


valencia 9035

group 2 - ito Crevin®



ito 05



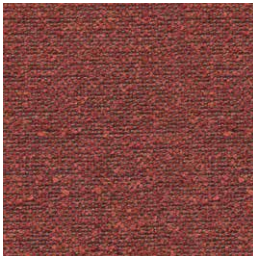
ito 18



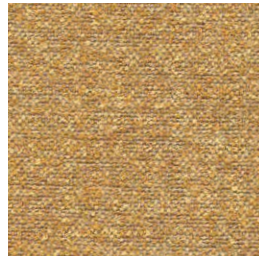
ito 12



ito 71



ito 21



ito 20



ito 38



ito 45

group 2 - sacco Crevin®



sacco 02



sacco 05



sacco 11

**expormim**

Expormim S.A.  
Pol. Ind. Jaime I  
46640 Moixent (Valencia) Spain  
+34 962 295 144/5  
export@expormim.com  
www.expormim.com

Expormim USA LLC  
(212) 204-8572  
usa@expormim.com  
www.expormim.com

5/6

indoor

Cushions / confección

group 3 - ascendent Carlucci®



ascendent 090



ascendent 070



ascendent 071



ascendent 030



ascendent 093

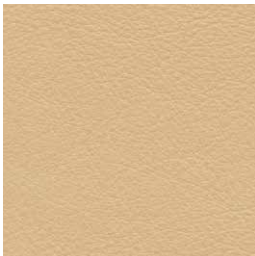


ascendent 022



ascendent 040

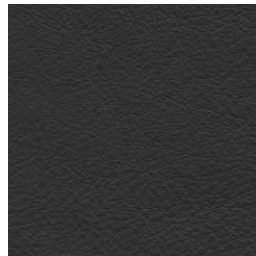
group 3 - elmosoft Elmo® leather



elmosoft 22024



elmosoft 93129



elmosoft 99999