

indoor

# Huma

## Upholstered swivel armchair with casters / sillón tapizado giratorio con ruedas

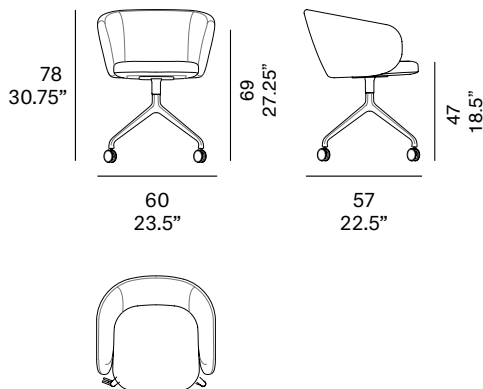
Mario Ruiz, 2015/2021

T071 SW



Upholstered swivel armchair with metal legs with casters. Backrest comes in steel tube covered with cold-cured moulded polyurethane foam. Upholstered seat and backrest. Possibility of customization through a wide variety of high performance technical fabrics.

Sillón giratorio tapizado con patas de metal y con ruedas. La estructura del respaldo es de tubo de acero revestido con espuma flexible de poliuretano. Asiento y respaldo tapizados. Posibilidad de personalización mediante una amplia variedad de tejidos técnicos de altas prestaciones de uso.



### Shipment details

Qty	1 armchair (1 box)
Volume	0,33 m <sup>3</sup> / 11.7 ft <sup>3</sup>
Gross weight	17,5 kg / 38.6 lb
Net weight	13,5 kg / 29.8 lb
Box dimensions (approx.)	65 x 62 x 83 cm 25,5" x 24,5" x 32,75"
Item dimensions (width x depth x height)	60 x 57 x 78 cm 23.5" x 22.5" x 30.75"
COM	2 m / 2.2 yd
	(1, 40 - 1,50 m / 54"-59")

indoor

**Upholstery / tapizado**

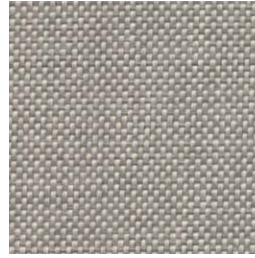
**group 1 - dolce Crevin®**



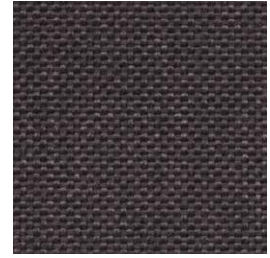
dolce 07



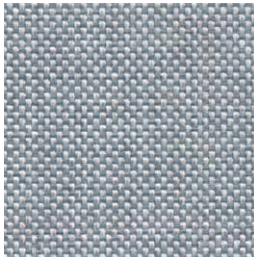
dolce 16



dolce 75



dolce 53



dolce 43



dolce 24



dolce 30

**group 1 - valencia™ faux leather**



valencia 1049



valencia 0020



valencia 9035

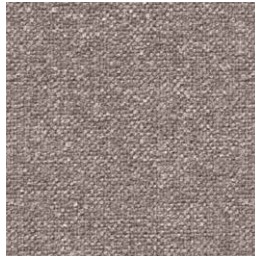
indoor

**Upholstery / tapizado**

**group 2 - ito Crevin®**



ito 05



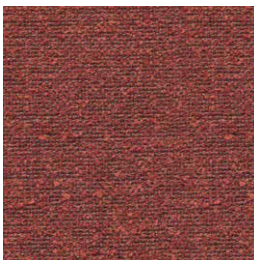
ito 18



ito 12



ito 71



ito 21



ito 20



ito 38



ito 45

**group 2 - sacco Crevin®**



sacco 02



sacco 05



indoor

Cushions / confección

group 3 - ascendent Carlucci®



ascendent 090



ascendent 070



ascendent 071



ascendent 030



ascendent 093



ascendent 022



ascendent 040

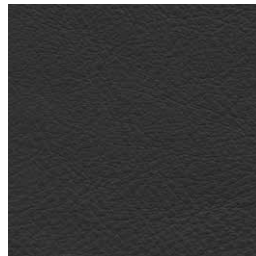
group 3 - elmosoft Elmo® leather



elmosoft 22024



elmosoft 93129



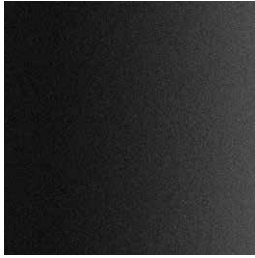
elmosoft 99999

indoor

Legs / patas

metallic finishes / metales

---



601 FT black