

indoor

# Atrivm indoor

## Rectangular dining table / mesa rectangular

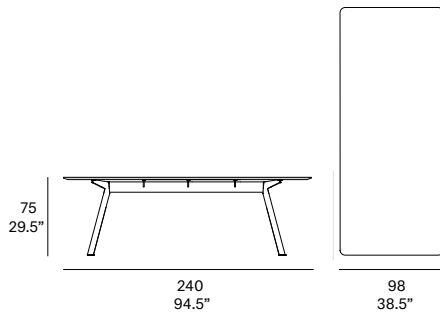
Manel Molina, 2020

T220 240



Tabletop made of solid wood from European oaks with 0.83" of section. Structure made of high resistance aluminum profile, finished with polyester powder. Legs made of solid wood profile from European oaks. The collection is also available in lacquered top version (MDF) and in European oak veneer top. Optional junction box with 2 sockets F CEE and 2 USB charger. Delivered unassembled.

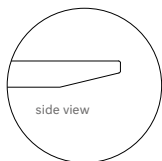
Tapa fabricada en madera maciza de roble europeo de 21 mm de sección. Estructura en perfilera de aluminio de alta resistencia, acabado en pintura de polvo de poliéster. Patas fabricadas en perfilera maciza de roble europeo. La colección también está disponible en versión lacada (MDF) y en tablero contrachapado de roble europeo. Caja de conexiones opcional con 2 enchufes F CEE y 2 cargadores USB. Se sirven desmontadas.



### Shipment details

Qty	1 dining table (3 boxes)
Volume	0,60 m <sup>3</sup> / 21.2 ft <sup>3</sup>
Gross weight	92 kg / 202.8 lb
Net weight	52 kg / 114.6 lb
Item dimensions (width x depth x height)	240 x 98 x 75 cm 94.5" x 38.5" x 29.5"

Tabletop options:



- solid wood top 21 mm/0.83" thick.
- veneered top 21 mm/0.83" thick.
- lacquered top 21 mm/0.83" thick.



\*Position of the junction box. For sockets and plugs other than type F CEE, please check availability / Posición de la caja de conexiones. Para bases de enchufe y clavijas distintas al tipo F CEE consultar disponibilidad.

**expormim**

Expormim S.A.  
Pol. Ind. Jaime I  
46640 Moixent (Valencia) Spain  
+34 962 295 144/5  
export@expormim.com  
www.expormim.com

Expormim USA LLC  
(212) 204-8572  
usa@expormim.com  
www.expormim.com

1/4

indoor

**Tabletop / tapa de mesa**

**solid wood / maderas**



W01 natural oak



W03 light oak



W02 white stained



W04 black stained

**veneered / contrachapado**



W01 natural oak



W03 light oak



W02 white stained



W04 black stained

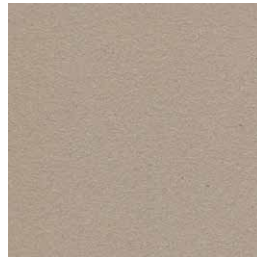
indoor

**Tabletop / tapa de mesa**

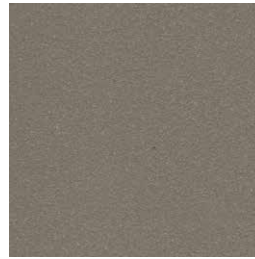
**textured lacquers**  
Lacquered top (MDF) / tapa lacada (MDF)



LT02 light grey



LT09 champagne

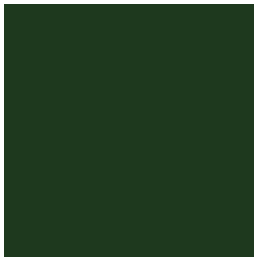


LT10 bronze



LT11 graphite

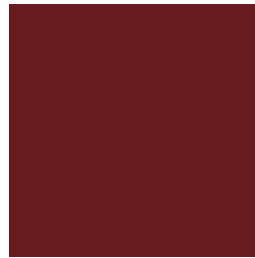
**lacquers**  
Lacquered top (MDF) / tapa lacada (MDF)



L17 forest green



L16 navy blue



L14 japanese red



L5 taupe

indoor

**Legs / patas**

**solid wood / madera**



W01 natural oak



W03 light oak



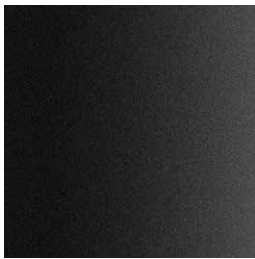
W02 white stained



W04 black stained

**Structure / estructura**

**Metallic finishes / metales**



601 FT black