

indoor

# Kiri

## Round dining table / mesa redonda

Mario Ruiz, 2021

T547

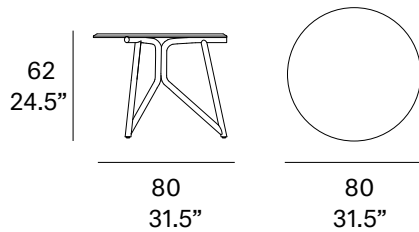


Structure made of peeled and tinted natural rattan. Finished with a three step coating (dye, base coat and top coat) highly resistant to solar radiation thanks to UV filters. Possibility to customize the tabletop by using different finishes: solid wood from European oaks with 1.65" of section and lacquered version (MDF). Protective caps with removable plastic-felt inserts.

Estructura en rattan natural pelado y tintado. Acabado con recubrimiento en tres fases (tinte, fondo y acabado) con filtros UV que lo hacen altamente resistente a la radiación solar. Posibilidad de personalizar la tapa mediante el empleo de diferentes tipos de acabado: lacado y madera maciza de 21 mm de sección. Tacos protectores reversibles de plástico-fieltro.

### Shipment details

Qty	1 dining table (1 box)
Volume	0,49 m <sup>3</sup> / 17.3 ft <sup>3</sup>
Gross weight	14 kg / 30.9 lb
Net weight	12 kg / 26.5 lb
Item dimensions (width x depth x height)	80 x 80 x 62 cm 31.5" x 31.5" x 24.5"



Tabletop options:



expormim

Expormim S.A.  
Pol. Ind. Jaime I  
46640 Moixent (Valencia) Spain  
+34 962 295 144/5  
export@expormim.com  
www.expormim.com

Expormim USA LLC  
(212) 204-8572  
usa@expormim.com  
www.expormim.com

1/3

indoor

**Solid wood top / tapa madera maciza**



W01 natural oak



W03 light oak



W02 white stained



W04 black stained

**Lacquered top / tapa lacada**

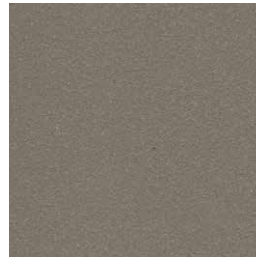
**Textured lacquers**



LT02 light grey



LT09 champagne



LT10 bronze

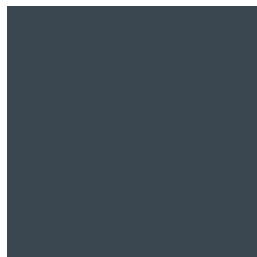


LT11 graphite

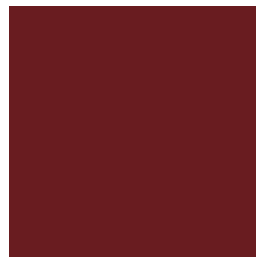
**Lacquers**



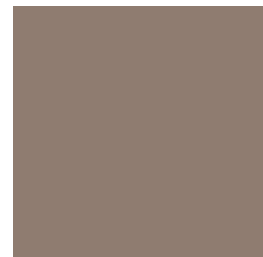
L17 forest green



L16 navy blue



L14 japanese red



L5 taupe

**Rattan**

**tinted**



R10 natural



R03 noce



R06 verde oliva



R08 azzurro



R07 mogano



R24 cinder purple



R23 french grey



R05 grigio



R09 nero

**lacquered**



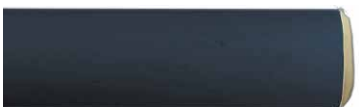
R02 bianco



R22 clay



R17 forest green



R16 navy blue



R14 japanese red

