

indoor

Lapala indoor Hand-woven chair / silla tejida

Lievore Altherr Molina, 2023

T597



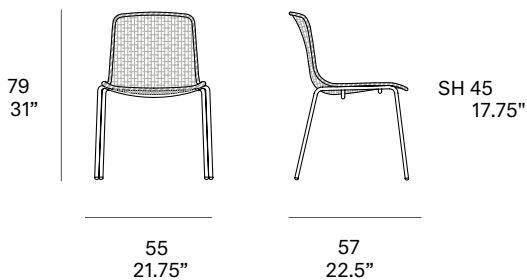
Chair made of stainless steel tube. Seat and backrest manufactured in peeled and tinted natural rattan of 2,5mm/0.10" diameter. Finished with a three step coating (dye, base coat and top coat) highly resistant to solar radiation thanks to UV filters. Legs made of lacquered steel tube. Stackable.

Silla fabricada en tubo de acero inoxidable. Asiento y respaldo tejido artesanalmente en médula de 2,5 mm. Acabado con recubrimiento en tres fases (tinte, fondo y acabado) con filtros UV que lo hacen altamente resistente a la radiación solar. Patas fabricadas en tubo de acero lacado. Apilable.

Shipment details

| | |
|-----------------|--|
| Qty | 2 chairs (1 box) |
| Volume | 0,39 m ³ / 13.7 ft ³ |
| Gross weight | 16 kg / 35.2 lb |
| Net weight (x1) | 6 kg / 13.2 lb |

| | |
|---|---|
| Item dimensions (width x depth x height) | 55 x 57 x 79 cm 21.75" x 22.5" x 31" |
|---|---|



indoor

Rattan

tinted



R10 natural



Legs / patas

metallic finishes / metales



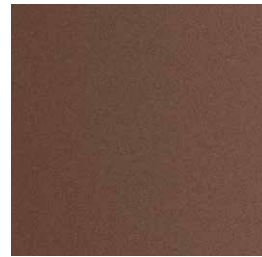
102 FT light grey
fine textured



109 FT champagne
fine textured



110 FT bronze
fine textured



108 FT oxide
fine textured



111 FT graphite
fine textured