

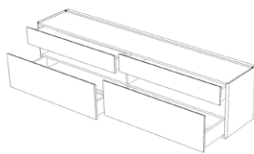
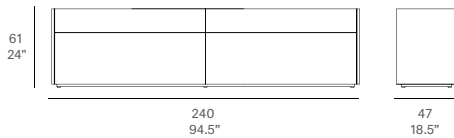
indoor

# Team

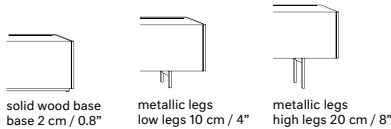
## 4-drawer sideboard / aparador 4 cajones

Mario Ruiz, 2017

T844



4-drawer / 4 cajones



STANDARD



SPECIAL

All units are manufactured WITH NO STANDARD CABLE GROMMETS. If needed, please indicate the place and position before placing an order.

Todos los muebles contenedores SE SIRVEN SIN AGUJEROS PASACABLES. Indicar lugar y posición en caso de necesidad.

Furniture system made of solid wood from European oaks. Possibility to customize the top by using different upholstery. There are several options for the legs: solid wood base of 0.8" high and metallic legs of 4" or 8" high. The collection is also available in a lacquered version (MDF).

Sistema de mobiliario fabricado en madera maciza de roble europeo. Posibilidad de personalizar la tapa mediante el empleo de multiples tapizados. Existen varias opciones de patas: base de madera de 2 cm de altura y patas metálicas de 10 ó 20 cm de altura. La colección también está disponible en versión lacada (MDF).

### Shipment details

Qty	1 sideboard (1 box)
Volume	0,84 m <sup>3</sup> / 29.7 ft <sup>3</sup>
Gross weight	120 kg / 264.6 lb
Net weight	112 kg / 246.9 lb
Item dimensions - with base (width x depth x height)	240 x 47 x 61 cm 94.5" x 18.5" x 24"
height with low legs	69 cm / 27.25"
height with high legs	79 cm / 31"

expormim

Expormim S.A.  
Pol. Ind. Jaime I  
46640 Moixent (Valencia) Spain  
+34 962 295 144/5  
export@expormim.com  
www.expormim.com

Expormim USA LLC  
(212) 204-8572  
usa@expormim.com  
www.expormim.com

1/5

indoor

**solid wood / mader**



W01 natural oak



W03 light oak



W02 white stained



W04 black stained

**Lacquered**

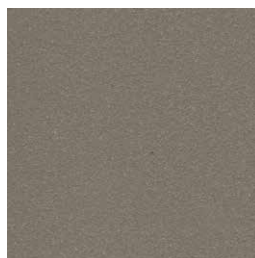
**textured lacquers**



LT02 light grey



LT09 champagne



LT10 bronze

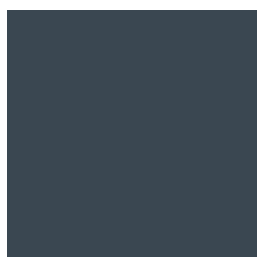


LT11 graphite

**lacquers**



L17 forest green



L16 navy blue



L14 japanese red



L5 taupe

indoor

**Metallic legs / patas metálicas**

---



102 FT light grey  
fine textured



109 FT champagne  
fine textured



110 FT bronze  
fine textured



108 FT oxide  
fine textured



111 FT graphite  
fine textured

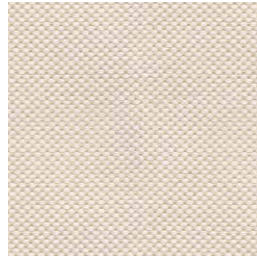
indoor

**Upholstered top / tapa tapizada**

**group 1 - natté Sunbrella®**



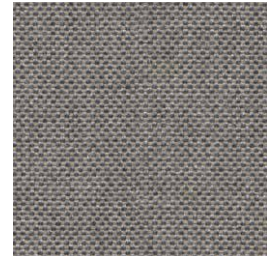
natté white



natté canvas



natté taupe chalk



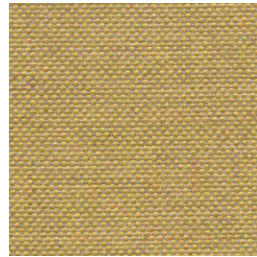
natté carbon beige



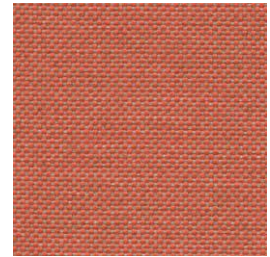
natté dark taupe



natté carbon sky



natté amber



natté flamingo

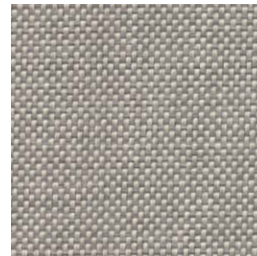
**group 1 - dolce Crevin®**



dolce 07



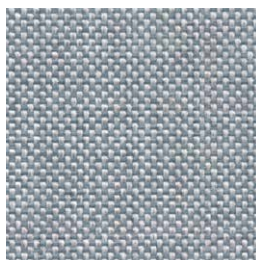
dolce 16



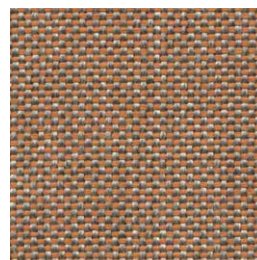
dolce 75



dolce 53



dolce 43



dolce 24



dolce 30



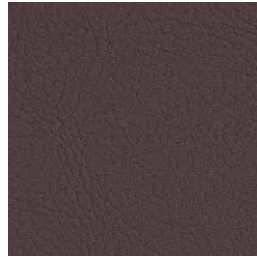
indoor

**Upholstered top / tapa tapizada**

**group 1 - valencia™ faux leather**



valencia 1049



valencia 0020

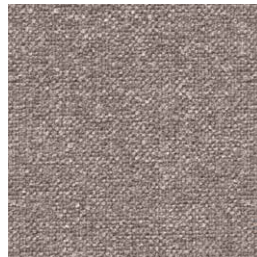


valencia 9035

**group 2 - ito Crevin®**



ito 05



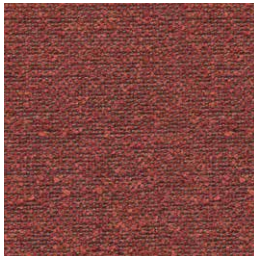
ito 18



ito 12



ito 71



ito 21



ito 20



ito 38



ito 45

**group 2 - sacco Crevin®**



sacco 02



sacco 05



sacco 11

**expormim**

Expormim S.A.  
Pol. Ind. Jaime I  
46640 Moixent (Valencia) Spain  
+34 962 295 144/5  
export@expormim.com  
www.expormim.com

Expormim USA LLC  
(212) 204-8572  
usa@expormim.com  
www.expormim.com